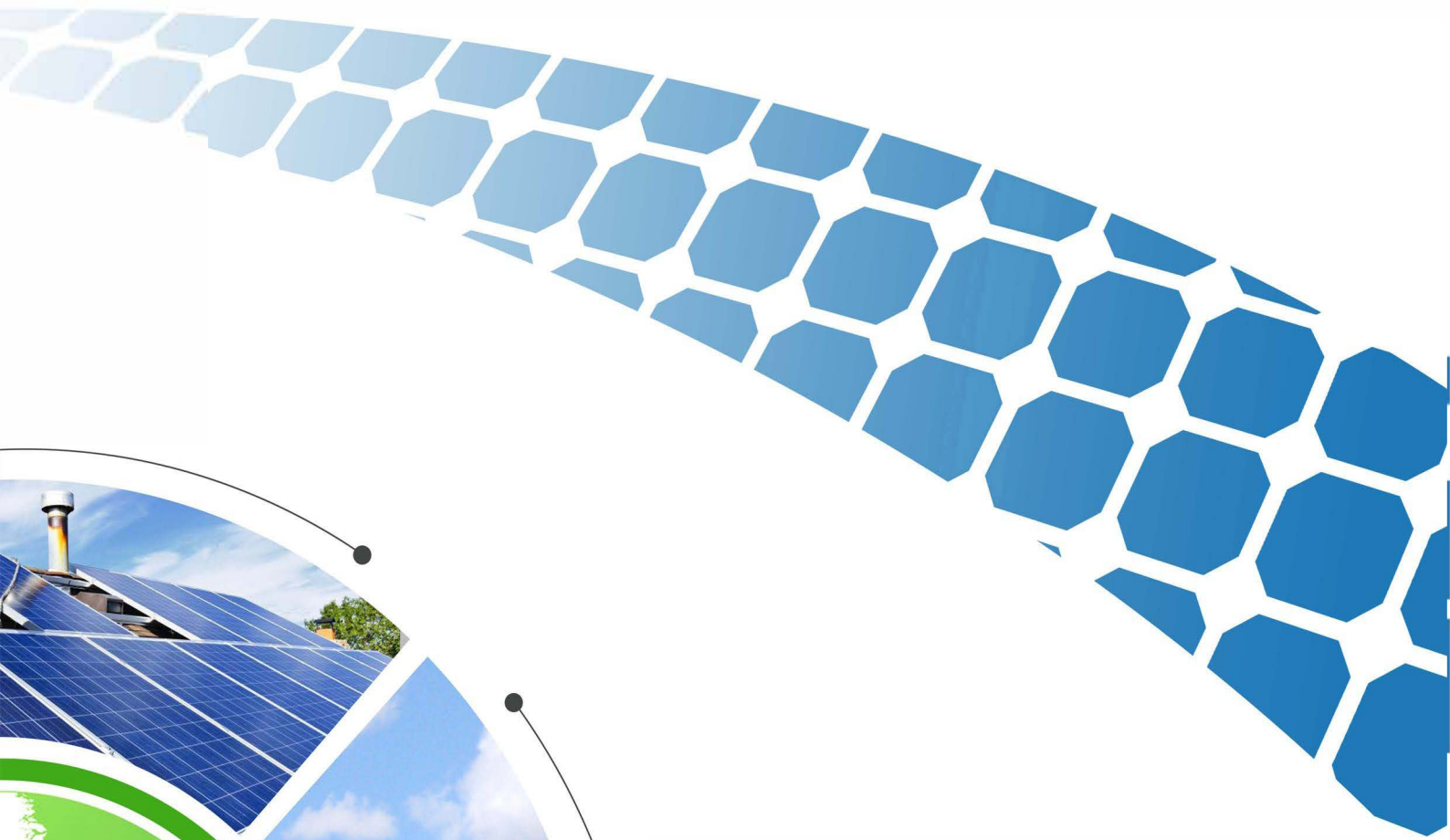




Quantex SOLAR



Germany Office / Factory
Elsoffer Str. 5, D-35794 Mengerskirchen, Germany
Tel.
+49 647 6418 5740 / +49 345 7789 9023

USA Office
8321 Old Courthouse Road, Vienna, VA 22182 USA
Tel: +1 571 308 9197

China Office
B,NO594 Tianhe road, Guangzhou China
Tel: +86 20 87096253 / +86 186 2064 2285
Factory : Xinyuan economic cooperating building,
Xishan village ,Guangzhou, China

www.quantexsolar.com
Email: info@quantexsolar.com

Cooperate Profile

Quantex Solar, Subsidiary of Quantex Global Group a comprehensive Energy Products company dedicated to excellence since 1984. Our superior products come from our innovative research and development in our factories located in Germany and China and the United-States.

Our main products include Solar power Storage System , Solar Panel , Public Solar Energy-saving lighting. Our products are qualified for T U V , C E , EMC, CB, ISO9001, ISO14001, and R O H S certificates.

We are committed to offering our customers comprehensive solutions to complex issues by providing high-quality products that have been field tested and improved upon over years of engineering and design development.

Over 34 years of professional research and development of our energy-saving and environmentally friendly products, we promise accurate delivery of products and deliver them on-time; while providing excellent service after the sale.

Quantex Global Group have an excellent reputation and we service companies all over the world, including England, France, Romania, Turkey, Australia, Spain and more.

Certificates

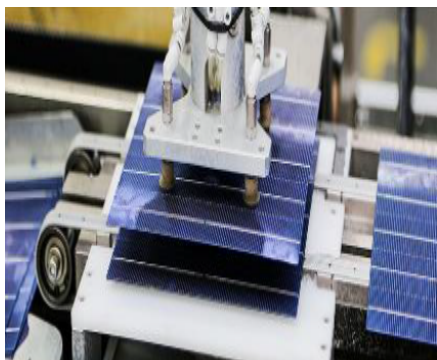


Cooperate Partners

SOLAR PAMEL



Technology Demonstration



Mono Solar Panel

Product Profile

Large glass laminated solar modules are mainly sealed by solar silicon wafers, anodic alumina rims and waterproof cable boxes. It has the characteristics of university, long service life (25 years), easy installation, strong wind and hail resistance, etc.



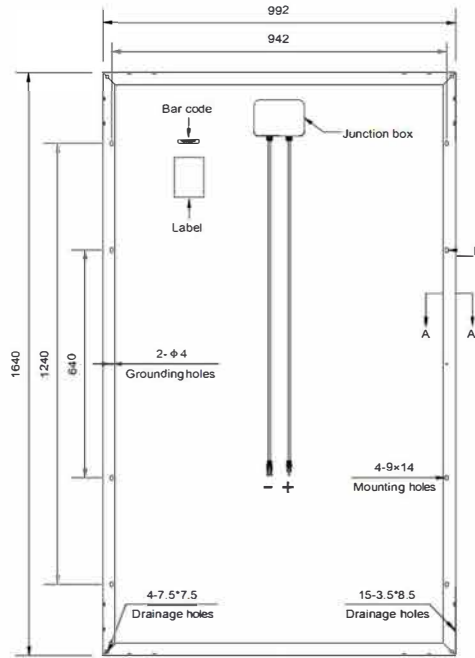
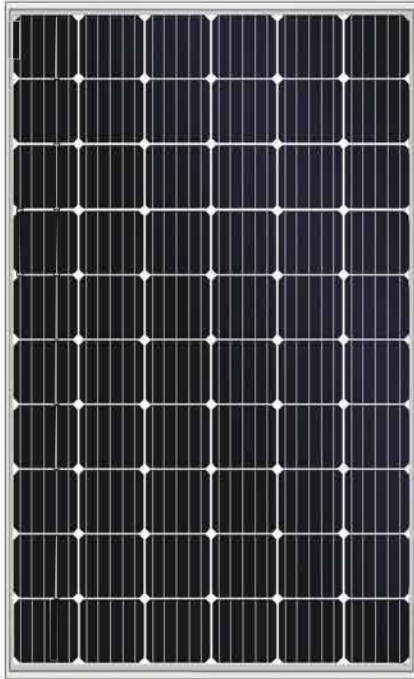
QTST-M

MONOCRYSTALLINE SOLAR PANEL PRODUCT DATA SHEET

Moudle Type	Pm(w)	Vmp(V)	Imp(A)	Voc(V)	Isc(A)	Dimension(mm)	Weight(Kg)
QTST-30M-36	30	18	1.67	22.4	1.78	650*360*25	2.8
QTST-40M-36	40	18	2.22	22.4	2.38	540*510*25	3.5
QTST-40M-36	40	18	2.22	22.4	2.38	420*670*25	3.5
QTST-50M-36	50	18	2.78	22.4	2.97	540*670*25	4.5
QTST-60M-36	60	18	3.33	22.4	3.57	630*670*25	5.2
QTST-70M-36	70	18	3.89	22.4	4.16	730*670*25	6
QTST-75M-36	75	18	4.44	22.4	4.76	830*670*25	6
QTST-80M-36	80	18	4.44	22.4	4.76	1000*540*30	6
QTST-90M-36	90	18	5	22.4	5.35	910*670*30	7.2
QTST-90M-36	90	18	5	22.4	5.35	1200*540*30	7.5
QTST-100M-36	100	18	5.56	22.4	5.94	1010*670*30	8
QTST-120M-36	120	18	6.12	22.4	7.12	1200*670*30	9.5
QTST-150M-36	150	18	8.33	22.4	8.92	1480*680*35	12
QTST-200M-72	200	36	5.56	44.6	5.94	1320*992*35	15.5
QTST-250M-60	250	30	8.33	36.2	8.92	1640*992*40	19.5
QTST-300M-72	300	36	8.33	44.6	8.92	1950*992*40	27.5

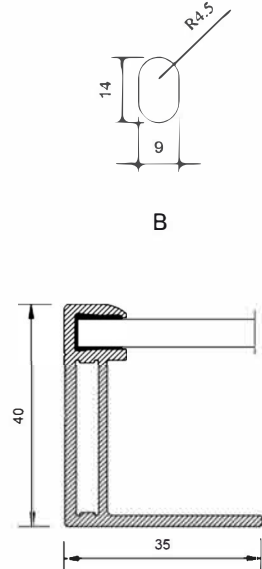
Product introduction

QTST-MON0-60CELL



Rear View

Unit: mm



Section A-A

ELECTRICAL CHARACTERISTICS AT STC

Module Number	QTST-255M-60	QTST-260M-60	QTST-265M-60	QTST-270M-60	QTST-275M-60	QTST-280M-60	QTST-285M-60	QTST-290M-60
Nominal Power (P_{max})	255W	260W	265W	270W	275W	280W	285W	290W
Open Circuit Voltage (V_{oc})	37.9V	38.0V	38.1V	38.2V	38.3V	38.4V	38.5V	38.6V
Short Circuit Current (I_{sc})	8.76A	8.88A	9.00A	9.12A	9.24A	9.37A	9.49A	9.62A
Voltage at Nominal Power (V_{mp})	30.8V	30.9V	31.0V	31.1V	31.2V	31.3V	31.4V	31.5V
Current at Nominal Power (I_{mp})	8.28A	8.42A	8.55A	8.69A	8.82A	8.95A	9.08A	9.21A
Module Efficiency (%)	17.67	17.98	18.29	18.60	18.90	19.21	19.52	19.83
Operating Temperature	-40°C to +85°C							
Maximum System Voltage	1000V DC							
Fire Resistance Rating	Type 1(in accordance with UL1703)/Class C(IEC61730)							
Maximum Series Fuse Rating	15A							

STC: Irradiance 1000W/m², Cell temperature 25°C, AM1.5

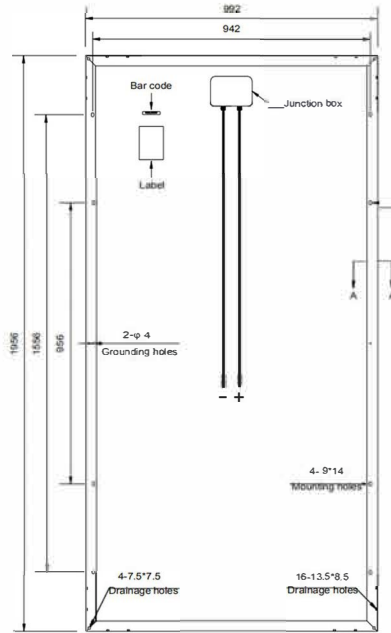
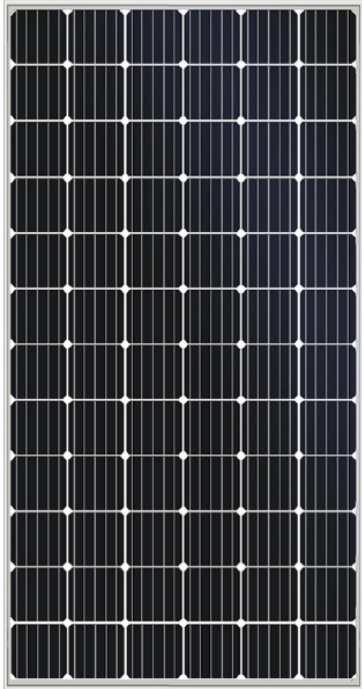
ELECTRICAL CHARACTERISTICS AT NOCT

Nominal Power (P_{max})	189W	192W	196W	200W	204W	207W	211W	215W
Open Circuit Voltage (V_{oc})	34.9V	35.0V	35.1V	35.2V	35.3V	35.4V	35.5V	35.6V
Short Circuit Current (I_{sc})	7.10A	7.19A	7.29A	7.39A	7.48A	7.59A	7.69A	7.79A
Voltage at Nominal Power (V_{mp})	28.0V	28.1V	28.2V	28.3V	28.4V	28.5V	28.6V	28.7V
Current at Nominal Power (I_{mp})	6.75A	6.84A	6.95A	7.07A	7.19A	7.27A	7.38A	7.50A

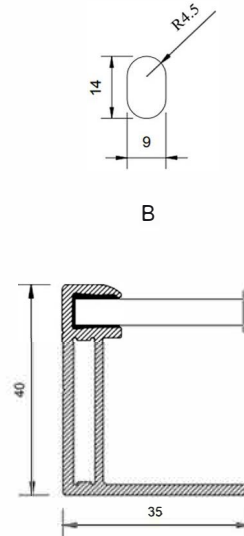
NOCT: Irradiance 800W/m², Ambient temperature 20°C, Wind Speed 1 m/s

Product introduction

QTST-MON0-72CELL



Unit: mm



Rear View

Section A-A

Specifications in this datasheet are subject to change without prior notice.

ELECTRICAL CHARACTERISTICS AT STC

Model Number	QTST-300M-72	QTST-310M-72	QTST-315M-72	QTST-320M-72	QTST-325M-72	QTST-330M-72	QTST-335M-72	QTST-340M-72	QTST-345M-72	QTST-350M-72	QTST-355M-72
Nominal Power (P_{max})	300W	310W	315W	320W	325W	330W	335W	340W	345W	350W	355W
Open Circuit Voltage (V_{OC})	45.6V	45.7V	45.8V	45.9V	46.0V	46.1V	46.2V	46.3V	46.4V	46.5V	46.6V
Short Circuit Current (I_{SC})	8.72A	8.83A	8.92A	9.02A	9.12A	9.21A	9.33A	9.45A	9.57A	9.68A	9.79A
Voltage at Nominal Power (V_{mp})	37.0V	37.1V	37.2V	37.3V	37.4V	37.5V	37.6V	37.7V	37.8V	37.9V	38.0V
Current at Nominal Power (I_{mp})	3.25A	3.36A	3.47A	3.58A	3.69A	3.80A	3.91A	4.02A	4.13A	4.24A	4.35A
Module Efficiency (%)	16.72	16.98	17.23	17.49	17.75	18.01	18.26	18.52	18.78	19.04	19.30
Operating Temperature	-40°C TO +85°C										
Maximum System Voltage	1000V DC										
Fire Resistance Rating	Type 1(in accordance with UL1703)/Class C(IEC61730)										
Maximum Series Fuse Rating	15A										

STC: Irradiance 1000W/m², Cell temperature 25°C, AM1.5

ELECTRICAL CHARACTERISTICS AT NOCT

Nominal Power (P_{max})	208W	228W	232W	236W	239W	243W	247W	250W	254W	258W	262W
Open Circuit Voltage (V_{OC})	42.0V	42.1V	42.2V	42.3V	42.4V	42.5V	42.6V	42.7V	42.8V	42.9V	43.0V
Short Circuit Current (I_{SC})	7.05A	7.15A	7.23A	7.31A	7.39A	7.46A	7.56A	7.65A	7.75A	7.84A	7.94A
Voltage at Nominal Power (V_{mp})	33.7V	33.8V	33.9V	34.0V	34.1V	34.2V	34.3V	34.4V	34.5V	34.6V	34.7V
Current at Nominal Power (I_{mp})	6.65A	6.75A	6.85A	6.94A	7.01A	7.11A	7.20A	7.27A	7.37A	7.46A	7.56

NOCT: Irradiance 800W/m². Ambient temperature 20°C. Wind Speed 1 m/s

QTST-390M-72

MONOCRYSTALLINEMODULE



WE INTIGRATED

THE

NEW ENERGY TECHNOLOGY

TO

SAVE THE WORLD



[IEC61215](#)
[IEC61730](#)



[ISO9001](#)
[ISO14001](#)
[OHSAS18001](#)

ADVANCED PERFORMANCE & PROVEN ADVANTAGES

- High module conversion efficiency up to 20.1% through innovative five busbar cell technology.
- Low degradation and excellent performance under high temperature and low light conditions.
- Robust aluminum frame ensures the modules to withstand wind loads up to 2400Pa and snow loads up to 5400Pa.
- High reliability against extreme environmental conditions (passing saltmist, ammonia and hail tests).
- Potential induced degradation (PID) resistance.
- Positive power tolerance of 0 ~ +3%.

CERTIFICATIONS

- IEC61215, IEC61730,
- ISO9001:2015: Quality management system
- ISO14001:2015: Environmental management system
- OHSAS18001:2007: Occupational health and safety management system

SPECIAL WARRANTY

- 20 years limited product warranty.
- Limited linear power warranty: 12 years 91.2% of the nominal power output, 30 years 80.6% of the nominal power output.



ELECTRICAL CHARACTERISTICS AT STC

Module Number	QTST- 390M-72
Nominal Power (P_{max})	390W
Open Circuit Voltage (V_{oc})	48.67V
Short Circuit Current (I_{sc})	10.33A
Voltage at Nominal Power (V_{mp})	39.6V
Current at Nominal Power (I_{mp})	9.87A
Module Efficiency (%)	20.1
Operating Temperature	-40°C to +85°C
Maximum System Voltage	1000V DC
Fire Resistance Rating	Type 1(in accordance with UL1703)/Class C(IEC61730)
Maximum Series Fuse Rating	15A

STC: irradiance 1000W/m², Cell temperature 25°C, AM1.5

ELECTRICAL CHARACTERISTICS AT NOCT

Nominal Power (P_{max})	290.7W
Open Circuit Voltage (V_{oc})	45.04V
Short Circuit Current (I_{sc})	8.36A
Voltage at Nominal Power (V_{mp})	36.8V
Current at Nominal Power (I_{mp})	7.93A

NOCT: Irradiance 800W/m², Ambient temperature 20°C, Wind Speed 1 m/s

MECHANICAL CHARACTERISTICS

Cell type	Monocrystalline 5BB 158.75x158.75mm (6x6inches)
Number of cells	72 (6x12)
Module dimensions	1956x992x40mm (77.01x39.06x1.57inches)
Weight	22.5kg (49.6lbs)
Front cover	3.2mm (0.13inches) tempered glass with AR coating
Frame	Anodized aluminum alloy
Junction box	IP67, 3 diodes
Cable	4mm ² (0.006inches ²), 900mm (35.43inches)
Connector	MC4 or MC4 compatible

TEMPERATURE CHARACTERISTICS

Nominal Operating Cell Temperature (NOCT)	45°C±2°C
Temperature Coefficients of P_{max}	-0.41%/°C
Temperature Coefficients of V_{oc}	-0.31%/°C
Temperature Coefficients of I_{sc}	0.05%/°C

PACKAGING

Standard packaging	27pcs/pallet
Module quantity per 20' container	270pcs(GP)/375pcs
Module quantity per 40' container	648pcs(GP)/750pcs(HQ)

QTST-400M-72

MONOCRYSTALLINEMODULE



WE INTEGRATED

THE

NEW ENERGY TECHNOLOGY

TO

SAVE THE WORLD

ADVANCED PERFORMANCE & PROVEN ADVANTAGES

- High module conversion efficiency up to 20.6% through innovative five busbar cell technology.
- Low degradation and excellent performance under high temperature and low light conditions.
- Robust aluminum frame ensures the modules to withstand wind loads up to 2400Pa and snow loads up to 5400Pa.
- High reliability against extreme environmental conditions (passing salt mist, ammonia and hail tests).
- Potential induced degradation (PID) resistance.
- Positive power tolerance of 0 ~ +3%.

CERTIFICATIONS

- IEC61215, IEC61730,
- ISO9001:2015: Quality management system
- ISO14001:2015: Environmental management system
- OHSAS18001:2007: Occupational health and safety management system

SPECIAL WARRANTY

- 20 years limited product warranty.
- Limited linear power warranty: 12 years 91.2% of the nominal power output, 30 years 80.6% of the nominal power output.



[IEC61215](#)
[IEC61730](#)



[ISO9001](#)
[ISO14001](#)
[OHSAS18001](#)



ELECTRICAL CHARACTERISTICS AT STC

Module Number	QTST- 400M-72
Nominal Power (P_{max})	400W
Open Circuit Voltage (V_{oc})	49.53V
Short Circuit Current (I_{sc})	10.39A
Voltage at Nominal Power (V_{mp})	40.3V
Current at Nominal Power (I_{mp})	9.93A
Module Efficiency (%)	20.6
Operating Temperature	-40°C to +85°C
Maximum System Voltage	1000V DC
Fire Resistance Rating	Type 1(in accordance with UL1703)/Class C(IEC61730)
Maximum Series Fuse Rating	15A

STC: irradiance 1000W/m², Cell temperature 25°C, AM1.5

ELECTRICAL CHARACTERISTICS AT NOCT

Nominal Power (P_{max})	298.2W
Open Circuit Voltage (V_{oc})	45.84V
Short Circuit Current (I_{sc})	8.41A
Voltage at Nominal Power (V_{mp})	37.45V
Current at Nominal Power (I_{mp})	7.98A

NOCT: Irradiance 800W/m², Ambient temperature 20°C, Wind Speed 1 m/s

MECHANICAL CHARACTERISTICS

Cell type	Monocrystalline 5BB 158.75x158.75mm (6x6inches)
Number of cells	72 (6x12)
Module dimensions	1956x992x40mm (77.01x39.06x1.57inches)
Weight	22.5kg (49.6lbs)
Front cover	3.2mm (0.13inches) tempered glass with AR coating
Frame	Anodized aluminum alloy
Junction box	IP67, 3 diodes
Cable	4mm ² (0.006inches ²), 900mm (35.43inches)
Connector	MC4 or MC4 compatible

TEMPERATURE CHARACTERISTICS

Nominal Operating Cell Temperature (NOCT)	45°C±2°C
Temperature Coefficients of P_{max}	-0.41%/°C
Temperature Coefficients of V_{oc}	-0.31%/°C
Temperature Coefficients of I_{sc}	0.05%/°C

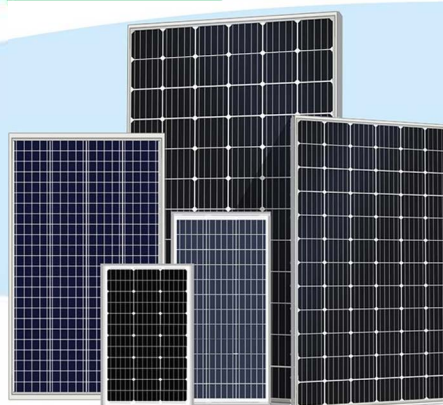
PACKAGING

Standard packaging	27pcs/pallet
Module quantity per 20' container	270pcs(GP)/375pcs
Module quantity per 40' container	648pcs(GP)/750pcs(HQ)

Poly Solar Panel

Product Profile

Large glass laminated solar modules are mainly sealed by solar silicon wafers, anodic alumina rims and waterproof cable boxes. It has the characteristics of university, long service life (25 years), easy installation, strong wind and hail resistance, etc.



QTST-P

POLYSILICON SOLAR PANEL PRODUCT DATA SHEET

Moudle Type	Pm(w)	Vmp(V)	Imp(A)	Voc(V)	Isc(A)	Dimension(mm)	Weight(Kg)
ZRST-30P-36	30	18	1.67	22.4	1.78	650*360*25	2.8
ZRST-40P-36	40	18	2.22	22.4	2.38	540*510*25	3.5
ZRST-40P-36	40	18	2.22	22.4	2.38	420*670*25	3.5
ZRST-50P-36	50	18	2.78	22.4	2.97	540*670*25	4.5
ZRST-60P-36	60	18	3.33	22.4	3.57	630*670*25	5.2
ZRST-70P-36	70	18	3.89	22.4	4.16	730*670*25	6
ZRST-75P-36	75	18	4.44	22.4	4.76	830*670*25	6
ZRST-80P-36	80	18	4.44	22.4	4.76	1000*540*30	6
ZRST-90P-36	90	18	5	22.4	5.35	910*670*30	7.2
ZRST-90P-36	90	18	5	22.4	5.35	1200*540*30	7.5
ZRST-100P-36	100	18	5.56	22.4	5.94	1010*670*30	8
ZRST-120P-36	120	18	6.12	22.4	7.12	1200*670*30	9.5
ZRST-150P-36	150	18	8.33	22.4	8.92	1480*680*35	12
ZRST-200P-72	200	36	5.56	44.6	5.94	1320*992*35	15.5
ZRST-250P-60	250	30	8.33	36.2	8.92	1640*992*40	19.5
ZRST-300P-72	300	36	8.33	44.6	8.92	1950*992*40	27.5

Product introduction

QTST-POLY-60CELL



MECHANICAL CHARACTERISTICS

Cell type	Polycrystalline 5BB 156x156mm (6x6inches)
Number of cells	60 (6x10)
Module dimensions	1640x992x40mm (64.57x39.06x1.38inches)
Weight	18kg (39.7lbs)
Front cover	3.2mm (0.13inches) tempered glass with AR coating
Frame	Anodized aluminum alloy
Junction box	IP67, 3 diodes
Cable	4mm ² (0.006inches ²), 900mm (35.43inches)
Connector	MC4 or MC4 compatible

ELECTRICAL CHARACTERISTICS AT STC

Module Number	QTST-250P-60	QTST-255P-60	QTST-260P-60	QTST-265P-60	QTST-270P-60	QTST-275P-60	QTST-280P-60	QTRST-285P-60
Nominal Power (P _{max})	250W	255W	260W	265W	270W	275W	280W	285W
Open Circuit Voltage (V _{oc})	37.0V	37.1V	37.2V	37.3V	37.4V	37.5V	37.6V	37.7V
Short Circuit Current (I _{sc})	8.75A	8.83A	8.90A	8.98A	9.09A	9.20A	9.31A	9.42A
Voltage at Nominal Power (V _{mp})	30.4V	30.6V	30.8V	31.0V	31.2V	31.4V	31.6V	31.8V
Current at Nominal Power (I _{mp})	8.26A	8.37A	8.47A	8.58A	8.69A	8.79A	8.89A	9.00A
Module Efficiency (%)	15.37	16.67	16.98	17.29	17.60	17.90	18.21	18.52
Operating Temperature	-40°C to +85°C							
Maximum System Voltage	1000V DC							
Fire Resistance Rating	Type 1(in accordance with UL1703)/Class C(IEC61730)							
Maximum Series Fuse Rating	15A							

STC: irradiance 1000W/m², Cell temperature 25°C, AM1.5

ELECTRICAL CHARACTERISTICS AT NOCT

Nominal Power (P _{max})	184W	188W	191W	195W	199W	202W	206W	210W
Open Circuit Voltage (V _{oc})	34.0V	34.1V	34.2V	34.3V	34.4V	34.5V	34.6V	34.7V
Short Circuit Current (I _{sc})	7.09A	7.15A	7.21A	7.27A	7.36A	7.45A	7.54A	7.63A
Voltage at Nominal Power (V _{mp})	27.6V	27.8V	27.9V	28.1V	28.3V	28.5V	28.7V	28.9V
Current at Nominal Power (I _{mp})	6.67A	6.77A	6.85A	6.94A	7.04A	7.09A	7.18A	7.27A

NOCT: Irradiance 800W/m², Ambient temperature 20°C, Wind Speed 1 m/s

Product introduction

QTST-POLY-72CELL



MECHANICAL CHARACTERISTICS

Cell type	Polycrystalline 5BB 156x156mm (6x6inches)
Number of cells	72 (6x12)
Module dimensions	1956x992x40mm (77.01x39.06x1.57inches)
Weight	22.5kg (49.6lbs)
Front cover	3.2mm (0.13inches) tempered glass with AR coating
Frame	Anodized aluminum alloy
Junction box	IP67, 3 diodes
Cable	4mm ² (0.006inches ²), 900mm (35.43inches)
Connector	MC4 or MC4 compatible

ELECTRICAL CHARACTERISTICS AT STC

Module Number	QTST-300P-72	QTST-305P-72	QTST-310P-72	QTST-315P-72	QTST-320P-72	QTST-325P-72	QTST-330P-72	QTST-335P-72	QTST-340P-72
Nominal Power (P _{max})	300W	305W	310W	315W	320W	325W	330W	335W	340W
Open Circuit Voltage (V _{oc})	44.3V	44.4V	44.5V	44.6V	44.7V	44.8V	44.9V	45.0V	45.1V
Short Circuit Current (I _{sc})	8.68A	8.76A	8.85A	8.93A	9.04A	9.15A	9.26A	9.38A	9.50A
Voltage at Nominal Power (V _{mp})	36.8V	36.9V	37.0V	37.1V	37.2V	37.3V	37.4V	37.5V	37.6V
Current at Nominal Power (I _{mp})	8.18A	8.29A	8.41A	8.52A	8.63A	8.74A	8.85A	8.96A	9.10A
Module Efficiency (%)	16.46	16.72	16.98	17.23	17.49	17.75	18.10	18.26	18.60
Operating Temperature	-40°C to +85°C								
Maximum System Voltage	1000V DC								
Fire Resistance Rating	Type 1 (in accordance with UL1703)/Class C (IEC61730)								
Maximum Series Fuse Rating	15A								

STC: irradiance 1000W/m², Cell temperature 25°C, AM1.5

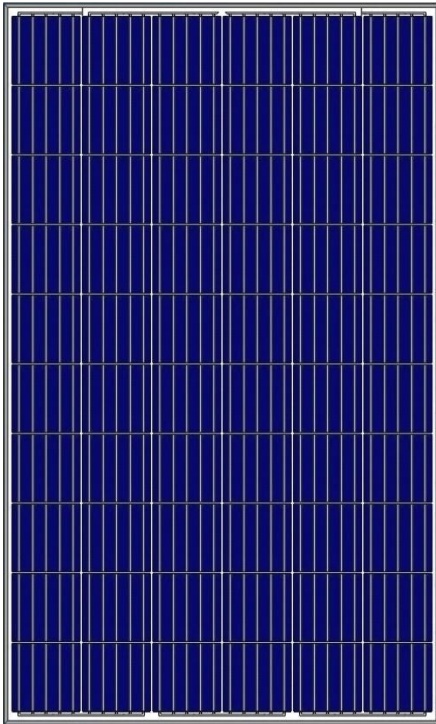
ELECTRICAL CHARACTERISTICS AT NOCT

Nominal Power (P _{max})	221W	224W	228W	232W	236W	239W	243W	247W	251W
Open Circuit Voltage (V _{oc})	40.7V	40.8V	40.9V	41.0V	41.1V	41.2V	41.3V	41.4V	41.5V
Short Circuit Current (I _{sc})	7.03A	7.10A	7.17A	7.23A	7.32A	7.41A	7.50A	7.60A	7.70A
Voltage at Nominal Power (V _{mp})	33.4V	33.5V	33.6V	33.7V	33.8V	33.9V	34.0V	34.1V	34.2V
Current at Nominal Power (I _{mp})	6.62A	6.69A	6.79A	6.89A	6.98A	7.05A	7.15A	7.25A	7.34A

NOCT: Irradiance 800W/m², A_i

QTST-350P-72

POLYCRYSTALLINEMODULE



WE INTEGRATED
THE
NEW ENERGY TECHNOLOGY
TO
SAVE THE WORLD

ADVANCED PERFORMANCE & PROVEN ADVANTAGES

- High module conversion efficiency up to 18.52% through innovative five busbar cell technology.
- Low degradation and excellent performance under high temperature and low light conditions.
- Robust aluminum frame ensures the modules to withstand wind loads up to 2400Pa and snow loads up to 5400Pa.
- High reliability against extreme environmental conditions (passing salt mist, ammonia and hail tests).
- Potential induced degradation (PID) resistance.
- Positive power tolerance of 0 ~ +3%.

CERTIFICATIONS

- IEC61215, IEC61730,
- ISO9001:2015: Quality management system
- ISO14001:2015: Environmental management system
- OHSAS18001:2007: Occupational health and safety management system

SPECIAL WARRANTY

- 20 years limited product warranty.
- Limited linear power warranty: 12 years 91.2% of the nominal power output, 30 years 80.6% of the nominal power output.



[IEC61215](#)
[IEC61730](#)



[ISO9001](#)
[ISO14001](#)
[OHSAS18001](#)



ELECTRICAL CHARACTERISTICS AT STC

Module Number	QTST- 350P-72
Nominal Power (P_{max})	350W
Open Circuit Voltage (V_{OC})	46.22V
Short Circuit Current (I_{SC})	9.63A
Voltage at Nominal Power (V_{mp})	38.4V
Current at Nominal Power (I_{mp})	9.12A
Module Efficiency (%)	18.5
Operating Temperature	-40°C to +85°C
Maximum System Voltage	1000V DC
Fire Resistance Rating	Type 1(in accordance with UL1703)/Class C(IEC61730)
Maximum Series Fuse Rating	15A

STC: irradiance 1000W/m², Cell temperature 25°C, AM1.5

ELECTRICAL CHARACTERISTICS AT NOCT

Nominal Power (P_{max})	259.3W
Open Circuit Voltage (V_{OC})	42.72V
Short Circuit Current (I_{SC})	7.79A
Voltage at Nominal Power (V_{mp})	35.31V
Current at Nominal Power (I_{mp})	7.33A

NOCT: Irradiance 800W/m², Ambient temperature 20°C, Wind Speed 1 m/s

MECHANICAL CHARACTERISTICS

Cell type	polycrystalline 5BB 156.75x156.75mm (6x6inches)
Number of cells	72 (6x12)
Module dimensions	1956x992x40mm (77.01x39.06x1.57inches)
Weight	22.5kg (49.6lbs)
Front cover	3.2mm (0.13inches) tempered glass with AR coating
Frame	Anodized aluminum alloy
Junction box	IP67, 3 diodes
Cable	4mm ² (0.006inches ²), 900mm (35.43inches)
Connector	MC4 or MC4 compatible

TEMPERATURE CHARACTERISTICS

Nominal Operating Cell Temperature (NOCT)	45°C±2°C
Temperature Coefficients of P_{max}	-0.41%/°C
Temperature Coefficients of V_{OC}	-0.31%/°C
Temperature Coefficients of I_{SC}	0.05%/°C

PACKAGING

Standard packaging	27pcs/pallet
Module quantity per 20' container	270pcs(GP)/375pcs
Module quantity per 40' container	648pcs(GP)/750pcs(HQ)

Projects Worldwide



150kw industry solar power plant



15kw solar power plant



8kw solar power plant



120kw solar power plant



30kw solar power plant



8kw solar power plant



25kw solar power plant



100kw solar power plant



30kw solar power plant



80kw solar power plant



50kw solar power plant

Germany Office / Factory
Elsoffer Str. 5, D-35794 Mengerskirchen, Germany
Tel.
+49 647 6418 5740 / +49 345 7789 9023

USA Office
8321 Old Courthouse Road, Vienna, VA 22182 USA
Tel: +1 571 308 9197

China Office
B,NO594 Tianhe road, Guangzhou China
Tel: +86 20 87096253 / +86 186 2064 2285
Factory : Xinyuan economic cooperating building,
Xishan village ,Guangzhou, China

www.quantexsolar.com
Email: info@quantexsolar.com

